

Diaphragm Seal

type 990.23

pulp and paper industry design

E 06.16.01

Ed.12.01

Design Diaphragm Seal in Pulp and Paper Industry design with extended diaphragm DN 48 Complete with stainless, liquid filled pressure gauge.

Diaphragm seal **Type 990.23**
Pressure rating PN 25
Material stainless steel 1.4435
Upper part with female G1/2" for instrument
Extended diaphragm to fit DN 48 connection complete with loose retainer flange dim 85 mm
Diaphragm in 1.4435
Extension 6,5 mm or 17 mm
The diaphragm is welded to the lower part
Temperature range max +200°C

Mounting Lower or back mounting or with elbow 90°

Fill fluid KN 2 silicone oil
KN 59 in underpressure and mano-vacuum

Working Pressure 90% of full scale range by fluctuating pressure
full scale value by short time pressure

Pressure Gauge Pressure Gauge, Stainless Steel, liquid filled casing with case dim 100 mm acc.to datasheet E02.09.02
Type 2940 with lower mount connection or type 2941 with back mount connection. IP 65

Pressure transmitter Pressure transmitter type S-10 with output signal 4-20 mA, see datasheet PE81.01

Option Welded flange 8600 can be delivered as option.
Suitable for extension 6,5 mm
Material: Stainless Steel 316L, Sealing Viton
Complete with boltings

Special Retainer flange in stainless steel
Pressure rate PN 40
Diaphragm and lower body coated ECTFE (+150°C)
Diaphragm and lower body coated with PFA (+260°C)
Capillary or cooling element

Optional extras Diaphragm or lower body can be delivered coated with PFA or ECTFE



Pressure range

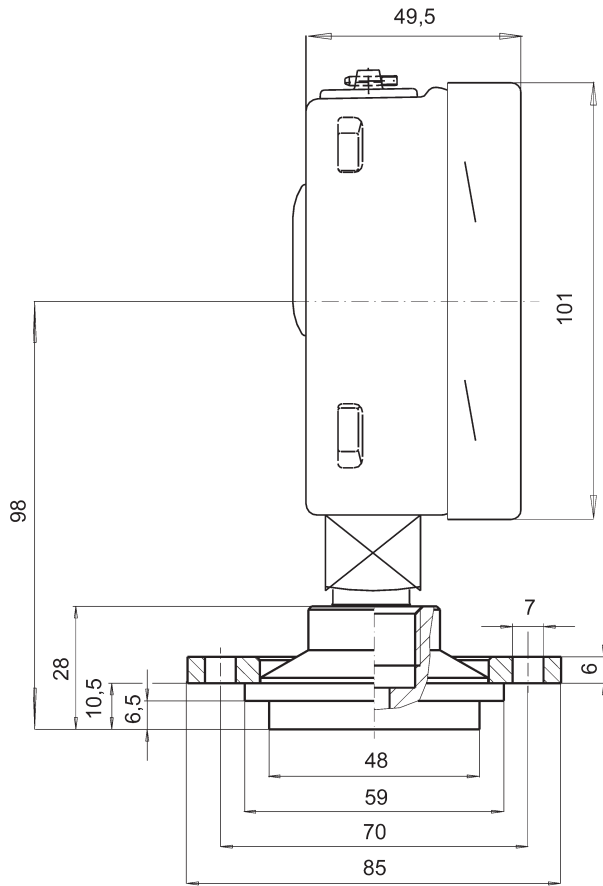
-	0-1 bar	0-1,6 bar	0-2,5 bar	0-4 bar	0-6 bar
0-10 bar	0-16 bar	0-25 bar	0-40 bar	-1/0 bar	-1/1,5 bar
-1/3 bar	-1/5 bar	-1/9 bar	-1/15 bar	-1/24 bar	-

Diaphragm Seal

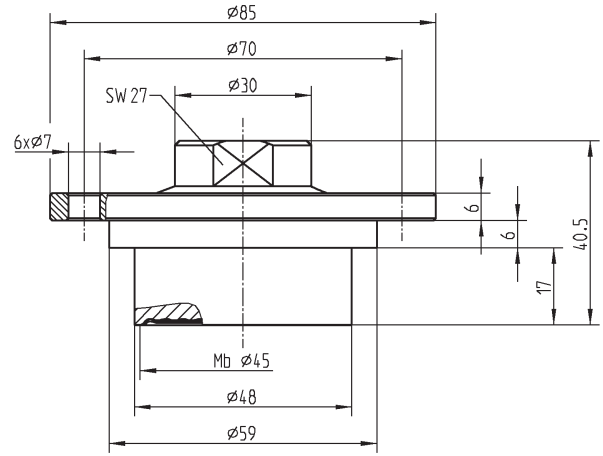
type 990.23

pulp and paper industry design

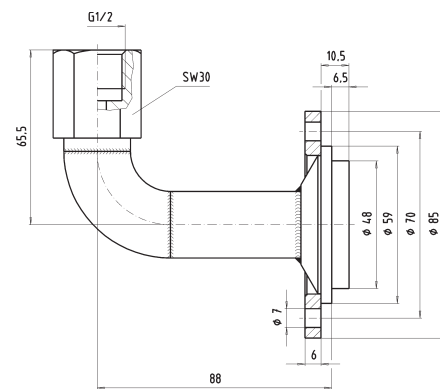
E 06.16.01



990.23 with extension 6,5 mm



990.23 with extension 17 mm



990.23 with L-bow 90°

Weld-in flange 8600

